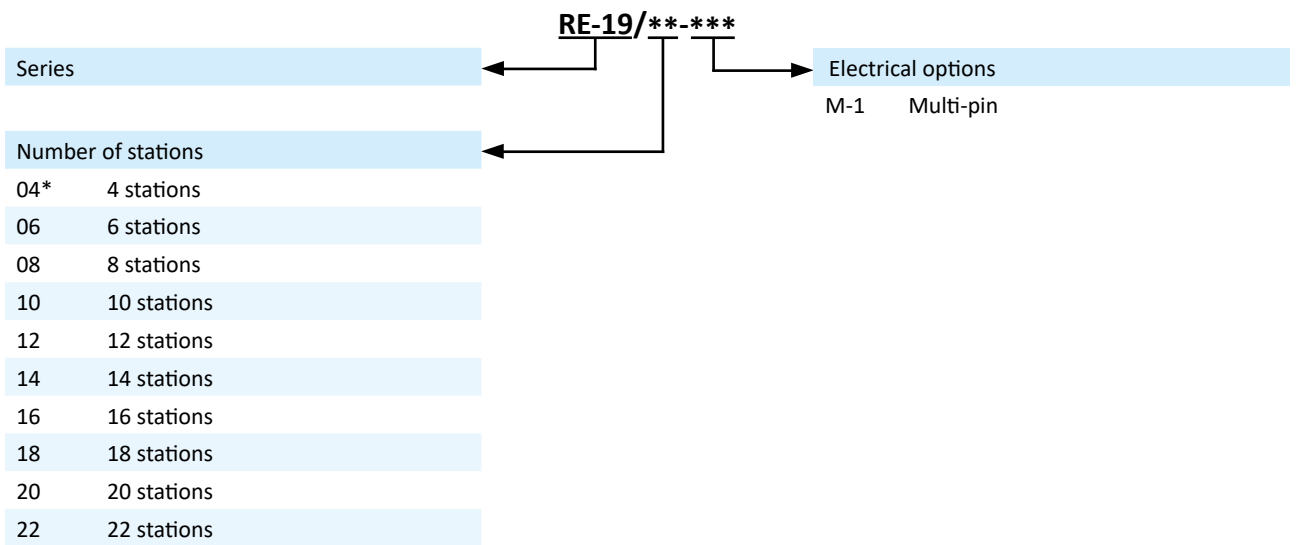


Technical details

Temperature range	-10°C ... +50°C
Medium	Filtered, oil-free and dried compressed air according to ISO 8573-1:2010, Class 7:2:4, instrument air, free of aggressive additives. Alternatively the pressure dew point must be at least 10°C below lowest occurring ambient temperature.
Materials	Body: Al (anodized), seals: NBR
Protection	IP 65 according to EN 60529



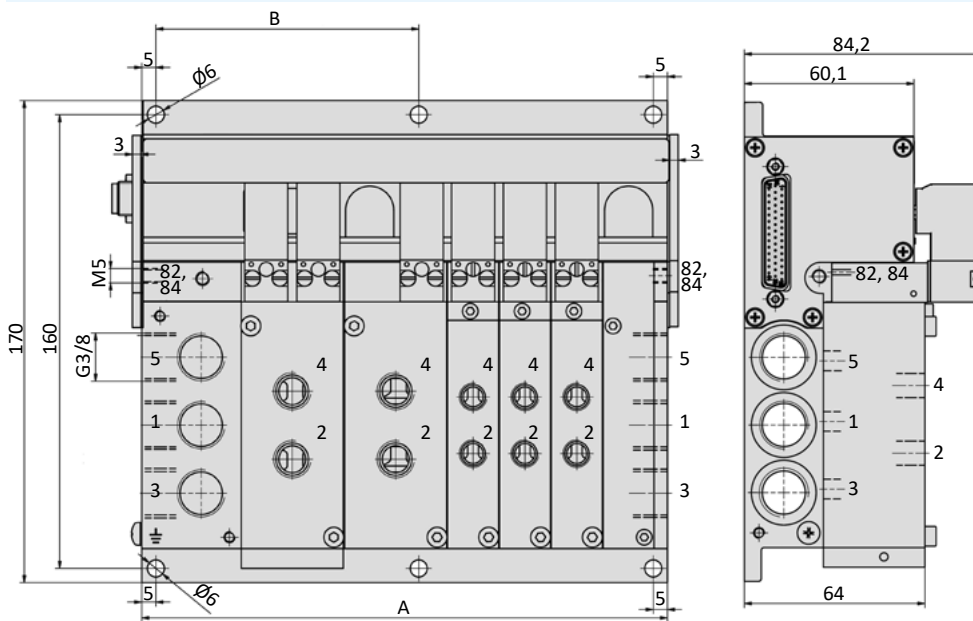
Manifold system with integrated electrical connection including LED indicators, manual override and built-in circuit protection. Valves with connection G 1/4 require 2 stations on the manifold. The above order code covers only the manifold. The multi-pin plug with cable must be ordered separately. The valve terminal is delivered pre-assembled and function-tested. If not specified with the order, valve configuration is as follows: Valves are mounted according to their order number, starting with high numbers at the side of the multi-pin, ending with low numbers on the opposite side, followed by blind plates (if ordered).

Order code


More detailed information about the installation you find in the manual at www.airtec.de.

Dimensions

Multi-pin



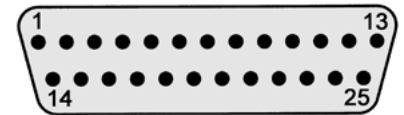
- 1 = pressure inlet
- 2,4 = outlets
- 3,5 = exhausts
- 82,84 = solenoid exhausts

Model-no.:	A	B	Weight without valves (kg)
RE-19/04-M-1	113	-	0,93
RE-19/06-M-1	149	-	1,26
RE-19/08-M-1	186	-	1,59
RE-19/10-M-1	222	-	1,92
RE-19/12-M-1	259	124,5	2,25
RE-19/14-M-1	295	142,5	2,58
RE-19/16-M-1	332	161	2,91
RE-19/18-M-1	369	179,5	3,24
RE-19/20-M-1	405	197,5	3,57
RE-19/22-M-1	442	216	3,90

Electrical options
Multi-pin

The 25-pin multi plug has to be ordered separately.

Pin	Function	Wire color	Pin	Function	Wire color
1	valve 1	white	14	valve 14	brown/ green
2	valve 2	brown	15	valve 15	white/ yellow
3	valve 3	green	16	valve 16	yellow/ brown
4	valve 4	yellow	17	valve 17	white/ grey
5	valve 5	grey	18	valve 18	grey/ brown
6	valve 6	pink	19	valve 19	white/ pink
7	valve 7	blue	20	valve 20	pink/ brown
8	valve 8	red	21	valve 21	white/ blue
9	valve 9	black	22	valve 22	brown/ blue
10	valve 10	violet	23	GND	white/ red
11	valve 11	grey/ pink	24	GND	brown/ red
12	valve 12	red/ blue	25	GND	white/ black
13	valve 13	white/ green			


Accessories
Model-no.:

RE-19-DT



Pressure dividing plug

Model-no.:

28-ST-68-M-xxx



25-pin multi plug, straight

 xxx = 105
 xxx = 110

 5 m cable
 10 m cable

Model-no.:

RE-19-V-EP



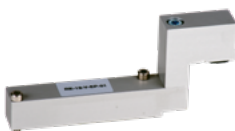
Blind plate

Model-no.:

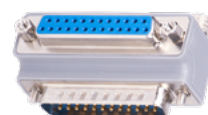
28-ST-M25-12-ADA-01

Model-no.:

RE-19-V-EP-01



Blind plate



Elbow 90°, Multi-pin-D-Sub, 25-pins

Series RE-19



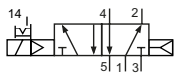
Technical details

Outlets	G1/8, G1/4
Temperature range	-10°C ... +50°C
Medium	Filtered, oil-free and dried compressed air according to ISO 8573-1:2010, Class 7:2:4, instrument air, free of aggressive additives. Alternatively the pressure dew point must be at least 10°C below lowest occurring ambient temperature.
Materials	Body: Al (anodized), seals: NBR, inner parts: Al, stainless steel and brass
Nominal voltage	24 V DC, ± 10%
Power consumption	1 W
Protection	IP 65 according to EN 60529

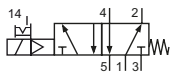


Electrically operated pool valve. The manual override is non-detent or detent and is operated by bolt or screw driver.

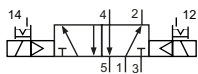
5/2-way-valves



KF-09-510-HNx-442
KF-10-510-HNx-442
5/2-way, single solenoid, air spring return

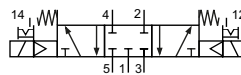


KF-09-511-HNx-442
KF-10-511-HNx-442
5/2-way, single solenoid, mechanical spring return

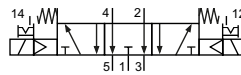


KF-10-520-HNx-442
5/2-way, double solenoid

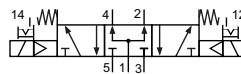
5/3-way-valves



KF-10-530-HNx-442
5/3-way, center position closed



KF-10-533-HNx-442
5/3-way, center position exhausted



KF-10-534-HNx-442
5/3-way, center position pressurized

Please complete: x = manual override (R = detent, T = non-detent)

Technical data

Model-no.:	KF-09-510-HNx-442	KF-09-511-HNx-442	KF-10-510-HNx-442	KF-10-511-HNx-442
Required space	1 station	1 station	2 stations	2 stations
Outlets	G1/8	G1/8	G1/4	G1/4
Operating pressure (bar)	3...8	3...8	2.5...8	2.5...8
Pilot pressure (bar)	3...8	3...8	2.5...8	2.5...8
Nominal size (mm)	6	6	9	9
Flow rate (NI/min)	950	810	2100	1800
Response time (ms) at 6 bar	on: 11 off: 20	on: 10 off: 26	on: 13 off: 26	on: 18 off: 29
Weight (kg)	0.200	0.200	0.370	0.370

Model-no.:	KF-10-520-HNx-442	KF-10-530-HNx-442	KF-10-533-HNx-442	KF-10-534-HNx-442
Required space	2 stations	2 stations	2 stations	2 stations
Outlets	G1/4	G1/4	G1/4	G1/4
Operating pressure (bar)	2.5...8	3...8	3...8	3...8
Pilot pressure (bar)	2.5...8	3...8	3...8	3...8
Nominal size (mm)	9	9	9	9
Flow rate (NI/min)	2100	1500	1500	1500
Response time (ms) at 6 bar	on: 16 off: 16	on: 16 off: 26	on: 16 off: 26	on: 16 off: 26
Weight (kg)	0.430	0.430	0.430	0.430

Please complete: x = manual override (R = detent, T = non-detent)