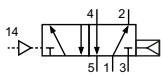


Technical details

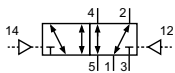
Connection	ISO 5599/1
Nominal size	Size 1: 9 mm Size 2: 13 mm Size 3: 14 mm
Temperature range	-10°C ... +70°C
Medium	Filtered, oil-free and dried compressed air according to ISO 8573-1:2010, Class 7:2:4, instrument air, free of aggressive additives. Differing the pressure dew point must be at least 10°C below lowest occurring ambient temperature.
Materials	Body: Al (anodized), seals: NBR and POM, inner parts: Al, stainless steel and brass
	Valves in accordance with 2014/34/EU (ATEX) available. (Chapter 13)



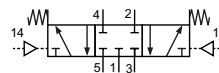
Pneumatically operated spool valve. The valve switches upon pressurization of the pilot port.

5/2-way-valves


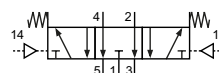
PI-01-511
PI-02-511
PI-03-511
5/2-way, single pilot, mechanical
spring return



PI-01-520
PI-02-520
PI-03-520
5/2-way, double pilot

5/3-way-valves


PI-02-530
PI-03-530
5/3-way, center position closed



PI-02-533
5/3-way, center position exhausted

Technical data

Model-no.:	PI-01-511		PI-01-520	
Operating pressure (bar)	0...10 bar		0...10 bar	
Pilot pressure (bar)	2.5 ... 10 bar		2 ... 10 bar	
Flow rate (NI/min)	1700		1700	
Weight (kg)	0.32		0.32	

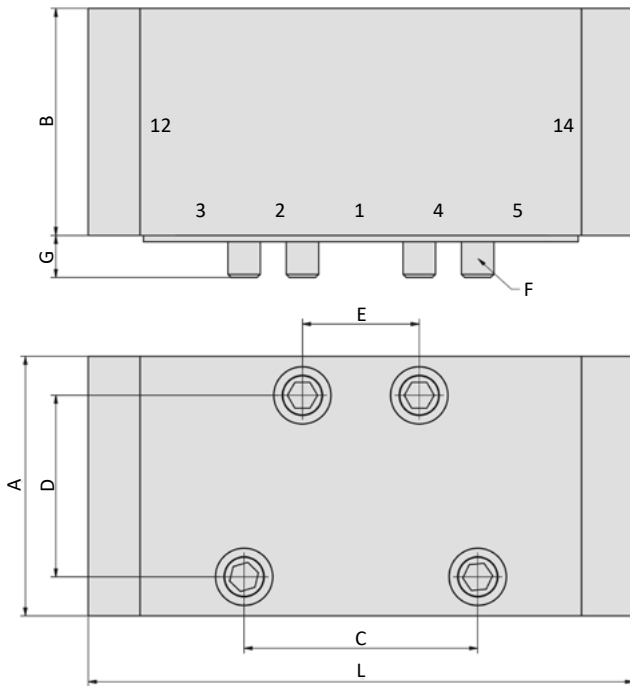
Model-no.:	PI-02-511	PI-02-520	PI-02-530	PI-02-533
Operating pressure (bar)	0...10 bar	0...10 bar	0...10 bar	0...10 bar
Pilot pressure (bar)	2 ... 10 bar	2 ... 10 bar	3 ... 10 bar	3 ... 10 bar
Flow rate (NI/min)	2020	2020	2020	2020
Weight (kg)	0.54	0.56	0.54	0.54

Model-no.:	PI-03-511	PI-03-520	PI-03-530
Operating pressure (bar)	0...10 bar	0...10 bar	0...10 bar
Pilot pressure (bar)	2 ... 10 bar	2 ... 10 bar	3 ... 10 bar
Flow rate (NI/min)	4150	4150	4150
Weight (kg)	0.96	1.00	0.96

Series PI-01, PI-02, PI-03

ISO 5599/1, Size 1 to 3

Dimensions



Model-no.:	A	B	C	D	E	F	G
PI-01-5xx	40	35	36	28	18	M5	8
PI-02-5xx	50	40	48	38	24	M6	8
PI-03-5xx	65	45	64	48	32	M8	13

Accessories



Manifolds and accessories: www.airtec.de