

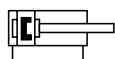
### Technical details

<b>Operating pressure</b>	1 ... 10 bar
<b>Temperature range</b>	-10°C ... +80°C
<b>Verfahrgeschwindigkeit</b>	max. 160 mm/s
<b>Medium</b>	Filtered, oil-free and dried compressed air according to ISO 8573-1:2010, Class 7:2:4, instrument air, free of aggressive additives. Differing the pressure dew point must be at least 10°C below lowest occurring ambient temperature.
<b>Materials</b>	Cylinder tube: Al (anodized) End caps: Al-die-cast (painted) Piston rod: steel, hard chrome plated Gate: steel 1.7131, plasma-nitrided Seals: PU, NBR
	Cylinders in accordance with 2014/34/EU (ATEX) available.



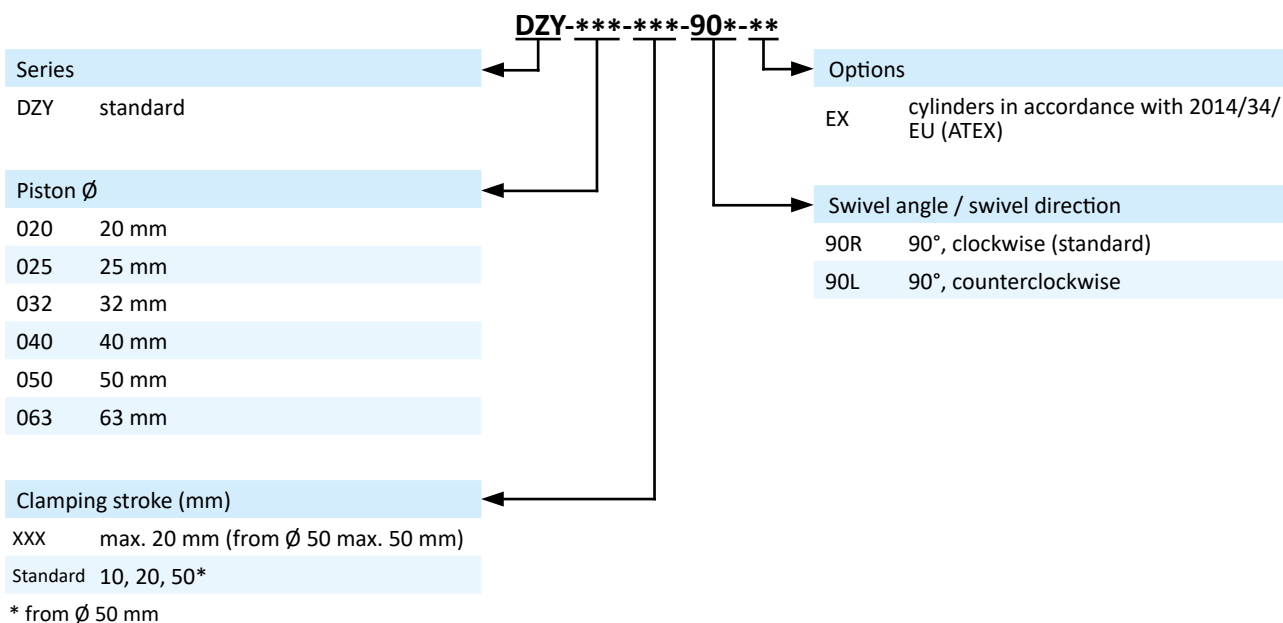
Double acting pneumatic cylinder with magnetic piston for proximity sensors and built-in cushioning rings. Due to the combination of linear and swivel movement of the piston rod, combined insertion and clamping operations can be realised. Special angles and special stroke lengths are available on request.

### Versions



double acting, built-in cushioning rings, with magnetic piston

### Order code



### Technical data

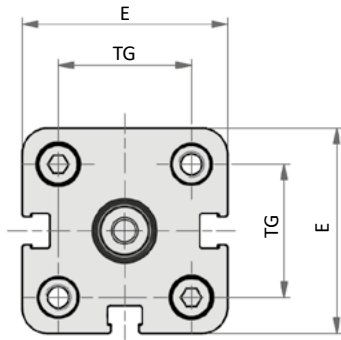
Model-no.:	DZY-020-...	DZY-025-...	DZY-032-...	DZY-040-...	DZY-050-...	DZY-063-...	
<b>Piston Ø (mm)</b>	20	25	32	40	50	63	
<b>Force at 6 bar (N)</b>	<b>Extension</b>	170	265	434	678	1060	1682
	<b>Retraction</b>	127	223	373	617	951	1574
<b>Connection</b>	M5	M5	G1/8	G1/8	G1/8	G1/8	

# Series DZY

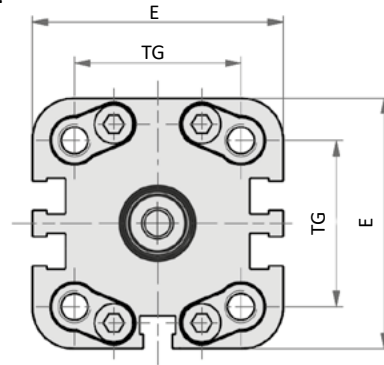
Linear/swivel clamps

## Dimensions

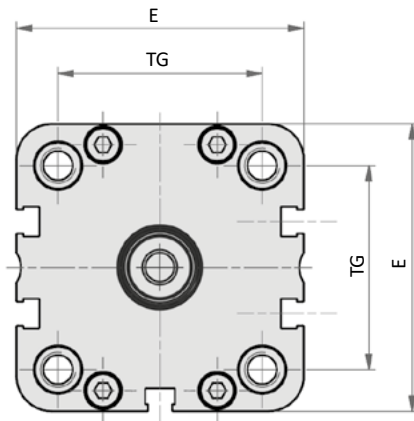
Ø 20 - 25



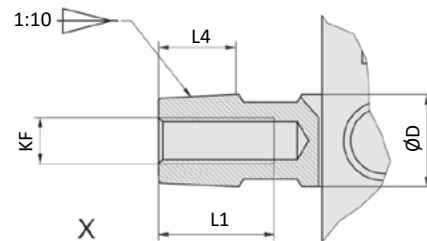
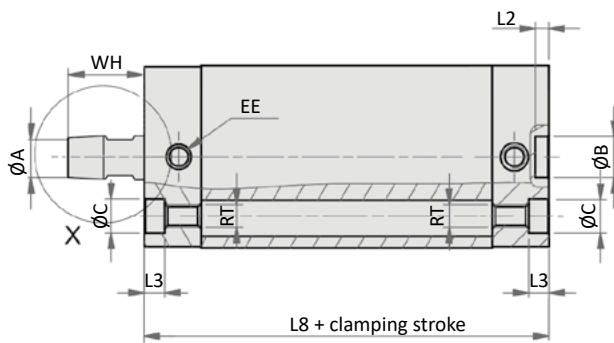
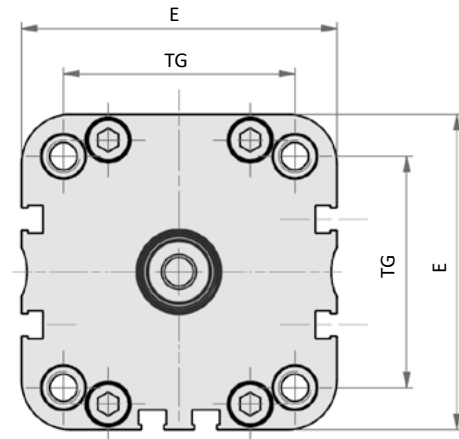
Ø 32



Ø 40 - 50

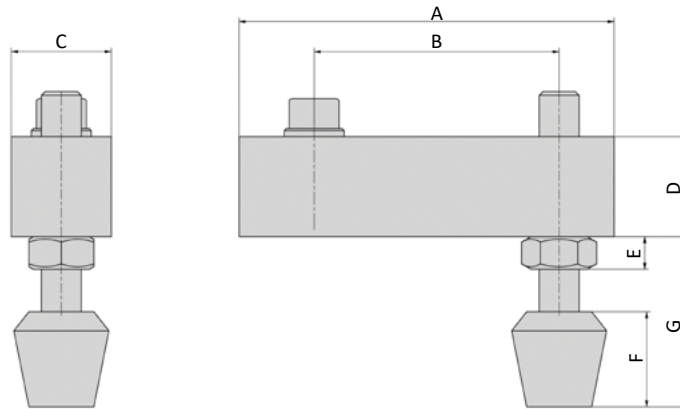


Ø 63



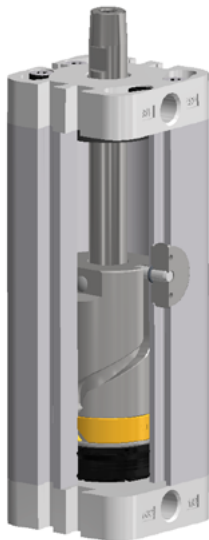
Piston Ø	Ø A	Ø B	Ø C	Ø D	E	EE	KF	L1	L2	L3	L4	L8	RT	TG	WH
20	9,25	9	7,5	10	36	M5	M6	15	3	4,5	7,5	99,5	M5	22	16,4
25	9,25	9	7,5	10	40	M5	M6	15	3	4,5	7,5	102,5	M5	26	16,4
32	11	9	9	12	49	G1/8	M6	15	3	5	10	121	M6	32,5	20,4
40	11	9	9	12	54,5	G1/8	M6	15	3	5	10	122,5	M6	38	21,2
50	15	12	10,5	16	65,5	G1/8	M8	18	4	5	10	165,4	M8	46,5	23,75
63	15	12	10,5	16	77	G1/8	M8	18	4	5	10	163,7	M8	56,5	23,75

**Dimensions clamping finger**



Model-no.:	A	B	C	D	E	F	G
DZY-20/25-SF	55	35,5	16	16	5	14	14 - 25
DZY-32/40-SF	75	49	20	20	6,5	19	19 - 45
DZY-50/63-SF	90	65	25	20	8	25	25 - 70

**Function**



**Swivel direction**

Indication of the swivel direction always when retracting the piston rod.



Swivelling to the right

View from above of the piston rod side with the piston rod retracted.  
Clockwise swivel direction.

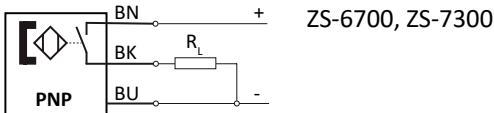
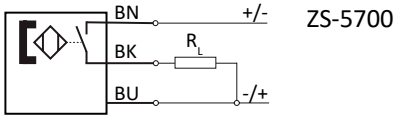
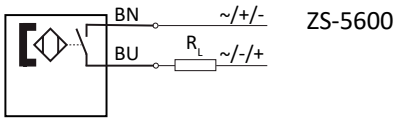


Swivelling to the left

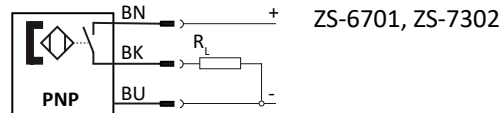
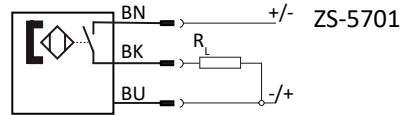
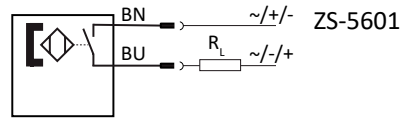
View from above of the piston rod side with the piston rod retracted.  
Counterclockwise swivel direction.

## Series ZS Proximity sensors





### Proximity sensors with cable






### Proximity sensors with plug



### Technical data

Model-no.:	ZS-5600	ZS-5601	ZS-5700	ZS-5701
				
<b>Design</b>	2-pole Reed sensor	2-pole Reed sensor	3-pole Reed sensor	3-pole Reed sensor
<b>Contact function</b>	NO	NO	NO	NO
<b>Rated operational voltage</b>	5 ... 240 V AC / DC	5 ... 60 V AC / DC	5 ... 30 V DC	5 ... 30 V DC
<b>Rated operational current <math>I_E</math></b>	3 ... 100 mA	3 ... 100 mA	≤ 500 mA	≤ 500 mA
<b>Max. voltage drop at <math>I_E</math></b>	≤ 2.5	≤ 2.5	≤ 0.1	≤ 0.1
<b>Breaking capacity</b>	10 W	10 W	10 W	10 W
<b>Cable length</b>	3 m	0.3 m with M8 connection	5 m	0.3 m with M8 connection
<b>Temperature range</b>	-10 ... +70°C	-10 ... +70°C	-10 ... +70°C	-10 ... +70°C
<b>Protection</b>	IP 67	IP 67	IP 67	IP 67
<b>Switching status indication</b>	LED red	LED red	LED yellow	LED yellow

Model-no.:	ZS-6700	ZS-6701	ZS-7300	ZS-7302
				
<b>Design</b>	3-pole inductive	3-pole inductive	3-pole inductive	3-pole inductive
<b>Contact function</b>	NO	NO	NO	NO
<b>Output</b>	PNP	PNP	PNP	PNP
<b>Rated operational voltage</b>	5 ... 30 V DC	5 ... 30 V DC	10 ... 30 V DC	10 ... 30 V DC
<b>Rated operational current <math>I_E</math></b>	≤ 200 mA	≤ 200 mA	≤ 100 mA	≤ 100 mA
<b>Max. voltage drop at <math>I_E</math></b>	≤ 1.0	≤ 1.0	≤ 2.5	≤ 2.5
<b>Breaking capacity</b>	6 W	6 W	3 W	3 W
<b>Cable length</b>	3 m	0.3 m with M8 connection	6 m	0.3 m with M12 connection
<b>Temperature range</b>	-10 ... +70°C	-10 ... +70°C	-20 ... +60°C	-20 ... +60°C
<b>Protection</b>	IP 67	IP 67	IP 67	IP 67
<b>Switching status indication</b>	LED green	LED green	LED yellow	LED yellow
	-	-	II 3G Ex nA T4 II 3D Ex tD A22 IP67 T 125°C	II 3D Ex tc IIIC T125°C Dc X


**Cable with bushing for proximity sensors**

<b>Model-no.:</b>	KA-30	KA-50	KA-100
<b>Connection</b>	M8, snap-in	M8, snap-in	M8, snap-in
<b>Version</b>	straight	straight	straight
<b>Cable length</b>	3 m	5 m	10 m

**Mounting**

The sensors are mounted at the groove of the cylinder profile. It is fixed by turning the fixing screw at the sensor clockwise. The cover stripe XLB-011 (see below) can be used for protecting the sensor cable.

**Cover for sensor groove**

<b>Model-no.:</b>	XLB-011
	
<b>Design</b>	plastic profile, 50 cm length, blue
<b>For series</b>	XL, NXD, NXE, NYD, NYE, NYSE, LX