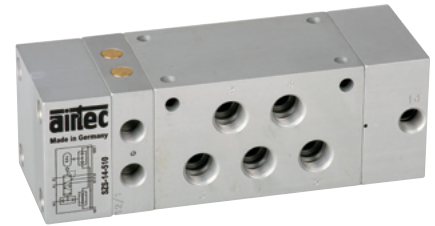


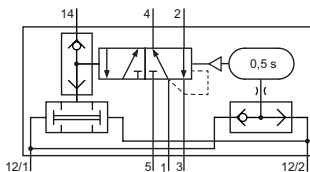
**Technical details**

<b>Temperature range</b>	-10°C ... +70°C
<b>Medium</b>	Filtered, oil-free and dried compressed air according to ISO 8573-1:2010, Class 7:2:4, instrument air, free of aggressive additives. Alternatively the pressure dew point must be at least 10°C below lowest occurring ambient temperature.
<b>Materials</b>	Body: Al (anodized), seals: NBR and POM, inner parts: Al, stainless steel and brass



The valve operates after two input signals at 12 arriving within 0.5 s. The valve is actuated as long as the signals continue. If the input signals do not arrive within 0.5 s, the valve does not operate. Both signals must be reset before the valve switches back on. In addition, it has a self-locking device. A signal to 14 actuates the two-signal-control as a standard 5/2-valve. When the signal at 14 ends, the valve resets.

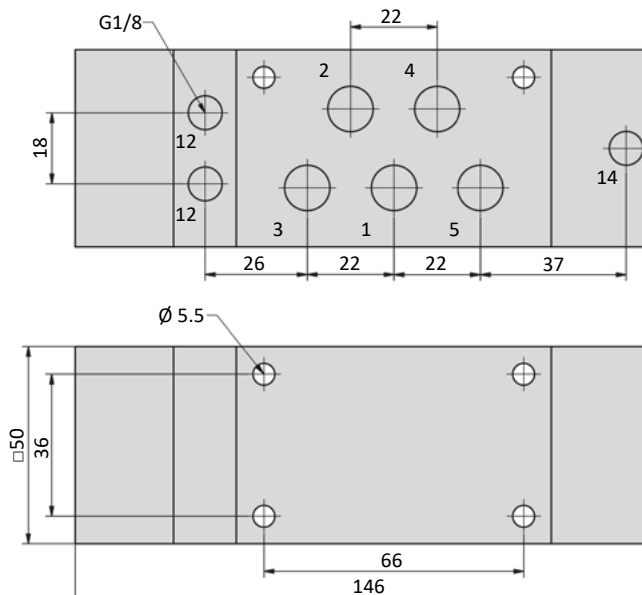
This part is no safety device in the sense of the MRL 2006/42/EG.

**5/2-way valve**


SZS-14-510  
two-signal controls,  
5/2-way

**Technical data**

<b>Model-no.:</b>	SZS-14-510
<b>Connection</b>	G1/4
<b>Nominal size (mm)</b>	8
<b>Operating pressure (bar)</b>	4 ... 10
<b>Pilot pressure (bar)</b>	4 ... 10
<b>Flow rate (NI/min)</b>	1300
<b>Weight (kg)</b>	0.885

**Dimensions**
**SZS-14-510**


- 1 = pressure inlet
- 2,4 = outlets
- 3,5 = exhausts
- 12 = signal ports
- 14 = signal port