

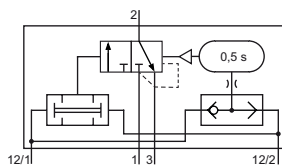
Technical details

Temperature range	-10°C ... +70°C
Medium	Filtered, oil-free and dried compressed air according to ISO 8573-1:2010, Class 7:2:4, instrument air, free of aggressive additives. Alternatively the pressure dew point must be at least 10°C below lowest occurring ambient temperature.
Materials	Body: Al (anodized), seals: NBR and POM, inner parts: Al, stainless steel and brass

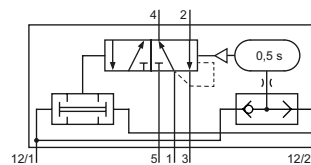


The valve operates after two input signals at 12 arriving within 0.5 s.
 The valve is actuated as long as the signals continue.
 If the input signals do not arrive within 0.5 s, the valve does not operate.
 Both signals must be reset before the valve switches back on.

This part is no safety device in the sense of the MRL 2006/42/EG.

3/2-way valve


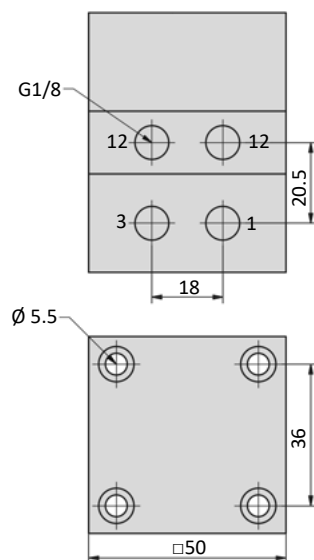
SZ-18-310
two-signal controls,
3/2-way

5/2-way valve


SZ-14-510
two-signal controls,
5/2-way

Technical data

Model-no.:	SZ-18-310	SZ-14-510
Connection	G1/8	G1/4
Nominal size (mm)	4	8
Operating pressure (bar)	4 ... 10	4 ... 10
Pilot pressure (bar)	4 ... 10	4 ... 10
Flow rate (NI/min)	280	1300
Weight (kg)	0.360	0.825

Dimensions
SZ-18-310


- 1 = pressure inlet
- 2,4 = outlets
- 3,5 = exhausts
- 12 = signal ports

SZ-14-510
